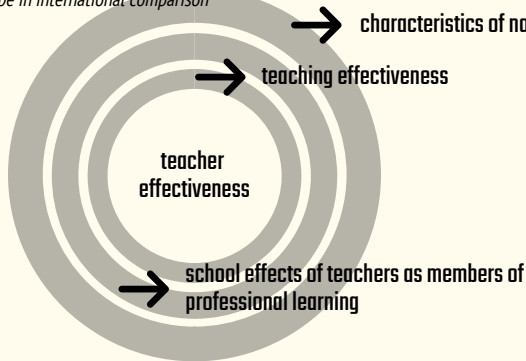


elite

We are a transnational consortium that has been working for the development of the ELITE project

ELITE is a 3-year project co-funded by the Erasmus+ programme of the European Commission

*Teachers' Professional Development:
Europe in international comparison*

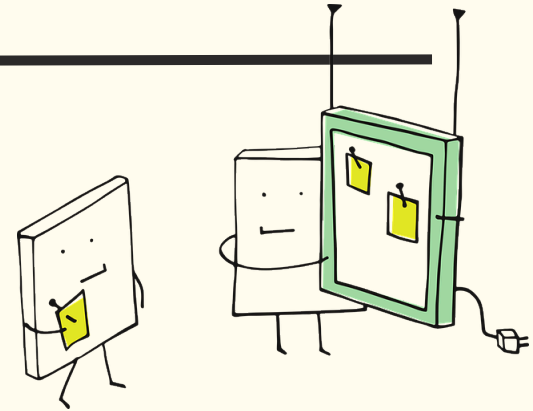


FB @EenquiriesLearning
learning-in-teaching.eu



Ms. Yiota Rigopoulou
yiota@iacm.forth.gr

Enhancing Learning In Teaching via e-inquiries



ELITE aims to provide digital professional learning opportunities for secondary in-service teachers' competence development.

More specifically, it targets STEM educators promoting the adoption of the inquiry-based learning (IBL) methodology in professional learning activities

Look at the conceptualisation of STEM teachers' professional learning for competence development as a means to enhance students' learning outcomes and achievement



Co-funded by the Erasmus+ Programme of the European Union
The project has been funded with support from the European Commission. This communication reflects the views only of the author, and the Commission cannot be held responsible for any use which may be made of the information contained therein.